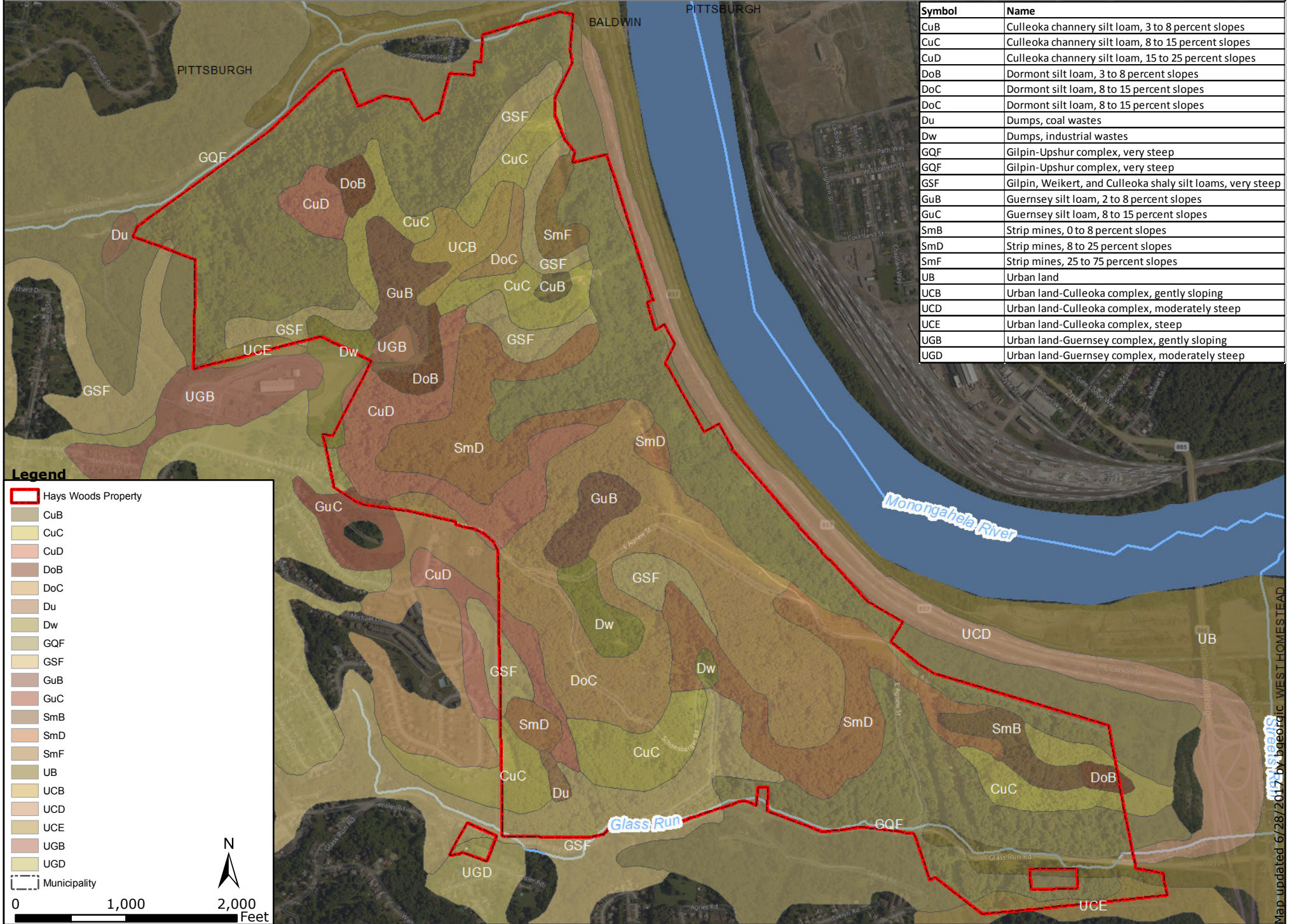


Hays Woods Property

Baldwin Borough and Pittsburgh City, Allegheny County



Symbol	Name
CuB	Culleoka channery silt loam, 3 to 8 percent slopes
CuC	Culleoka channery silt loam, 8 to 15 percent slopes
CuD	Culleoka channery silt loam, 15 to 25 percent slopes
DoB	Dormont silt loam, 3 to 8 percent slopes
DoC	Dormont silt loam, 8 to 15 percent slopes
DoC	Dormont silt loam, 8 to 15 percent slopes
Du	Dumps, coal wastes
Dw	Dumps, industrial wastes
GQF	Gilpin-Upshur complex, very steep
GQF	Gilpin-Upshur complex, very steep
GSF	Gilpin, Weikert, and Culleoka shaly silt loams, very steep
GuB	Guernsey silt loam, 2 to 8 percent slopes
GuC	Guernsey silt loam, 8 to 15 percent slopes
SmB	Strip mines, 0 to 8 percent slopes
SmD	Strip mines, 8 to 25 percent slopes
SmF	Strip mines, 25 to 75 percent slopes
UB	Urban land
UCB	Urban land-Culleoka complex, gently sloping
UCD	Urban land-Culleoka complex, moderately steep
UCE	Urban land-Culleoka complex, steep
UGB	Urban land-Guernsey complex, gently sloping
UGD	Urban land-Guernsey complex, moderately steep

Legend

- Hays Woods Property
- CuB
- CuC
- CuD
- DoB
- DoC
- Du
- Dw
- GQF
- GSF
- GuB
- GuC
- SmB
- SmD
- SmF
- UB
- UCB
- UCD
- UCE
- UGB
- UGD
- Municipality

0 1,000 2,000 Feet

N